

Primary and Secondary Schools Analysis

Municipality of East St. Paul

Prepared by: MRA Planning and Development

MARCH 2026



236 Osborne St. Unit A
Winnipeg, MB R3L 2W2
E: info@mrichard.ca | T: 204-202-7672
mraplanning.ca

The images presented within this document are intended solely for illustrative and educational purposes. It is essential to clarify that some of these images have not been generated by MRA. Their use is strictly aimed at facilitating visual understanding within the context of the document's content, and they should not be construed as originating from MRA.

Executive Summary

This report examines student enrolment, student demographics, and estimated school capacity within the Rural Municipality (RM) of East St. Paul to understand how existing schools may support future residential growth.

Census information provides additional context regarding the distribution of school-aged children. Approximately 1,200 children aged 5 to 14 reside in East St. Paul. About 58 percent of these children are enrolled in public schools located within the municipality. In comparison, roughly 40 percent attend schools outside East St. Paul or receive education at home.

Historic enrolment data from 2006 to 2024 shows that all three schools in East St. Paul recorded their highest enrolment in the mid-2000s. All three schools in East St. Paul are Kindergarten to Grade 8 schools, and there are no senior high schools within the municipality. Student enrolment has declined through the late 2000s and early 2010s before stabilizing around 2015. Recent enrolment trends from 2019 to 2024 indicate that student numbers across the three schools have remained stable, with only minor fluctuations from year to year.

A comparison between historical peak enrolment and current enrolment levels indicates that the schools within East St. Paul previously accommodated larger student populations than they do today. Based on this comparison, the estimated available capacity as of 2024 is approximately 194 students at Bird's Hill School, 68 students at Dr. F.W.L. Hamilton School, and 179 students at Robert Andrews Middle School.

A spatial review also identifies approximately 17 additional schools located within about 5 kilometres of the planning area in nearby Winnipeg, including 3 senior high schools. These schools operate within the same River East Transcona School Division and form part of the broader network of public schools serving the region.

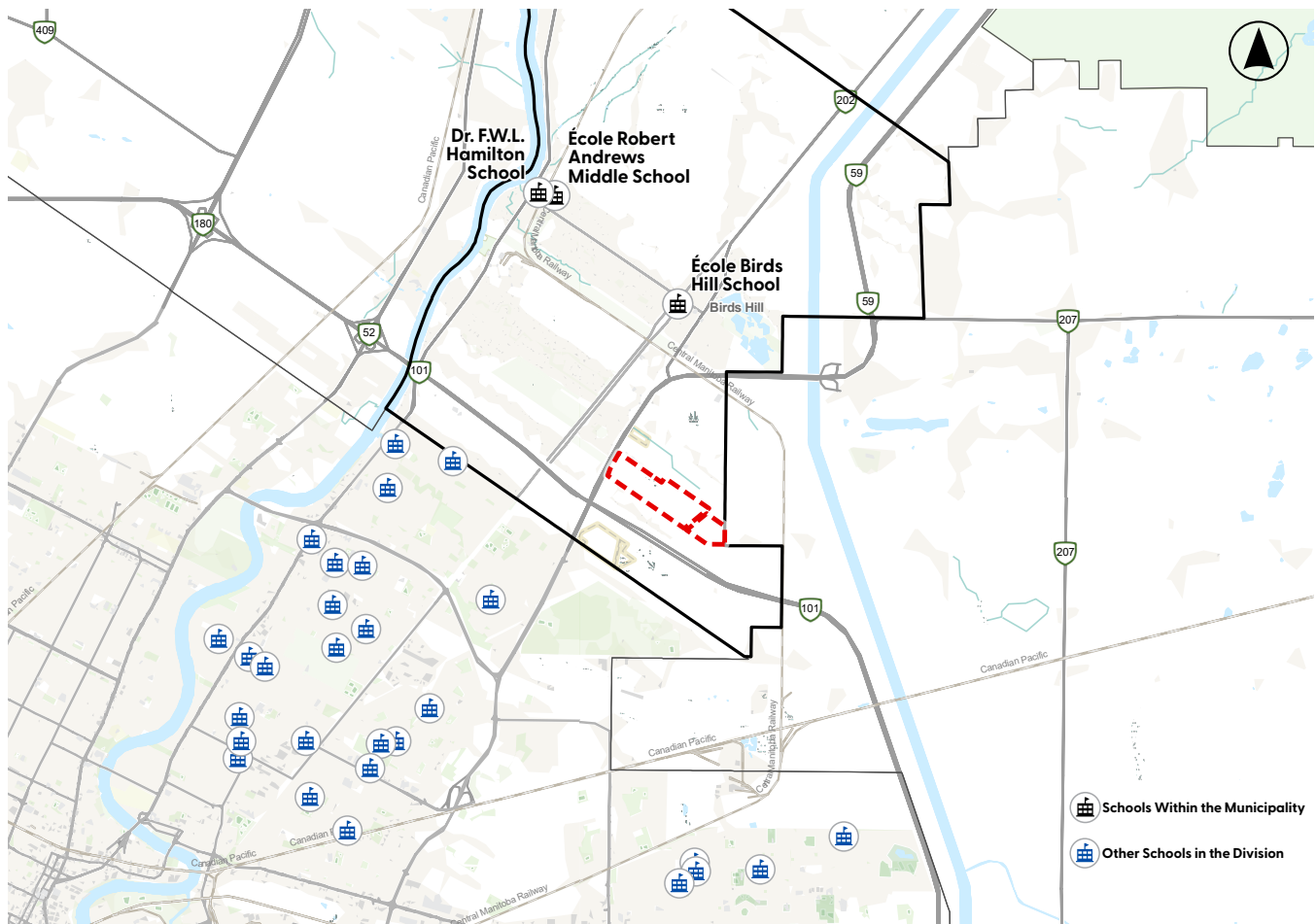
Overall, the analysis indicates that a broader regional school network serves East St. Paul. Existing schools within the municipality show stable enrolment levels and have some available capacity for additional students. These conditions suggest that the school system serving East St. Paul is likely able to accommodate enrolment growth associated with the early phases of development. As development continues and approaches fuller buildout, ongoing monitoring by the Province and the school division will be needed to determine whether additional capacity measures or new school facilities are required to meet future demand.

1. Introduction

The purpose of this report is to examine student enrolment trends, student demographics, and estimated school capacity in East St. Paul. The Rural Municipality (RM) of East St. Paul is served by the River East Transcona School Division (RETSD), which provides public education across northeast Winnipeg and several surrounding municipalities. While East St. Paul contains two elementary schools and one middle school, it does not contain a senior high school. As a result, high school students living in East St. Paul attend senior high schools elsewhere within the broader RETSD system in northeast Winnipeg and surrounding municipalities.

Three RETSD schools are located within the RM of East St. Paul and serve the local student population:

- Bird's Hill School (K-5)
- Dr. F.W.L. Hamilton School (K-5)
- Robert Andrews Middle School (6-8)



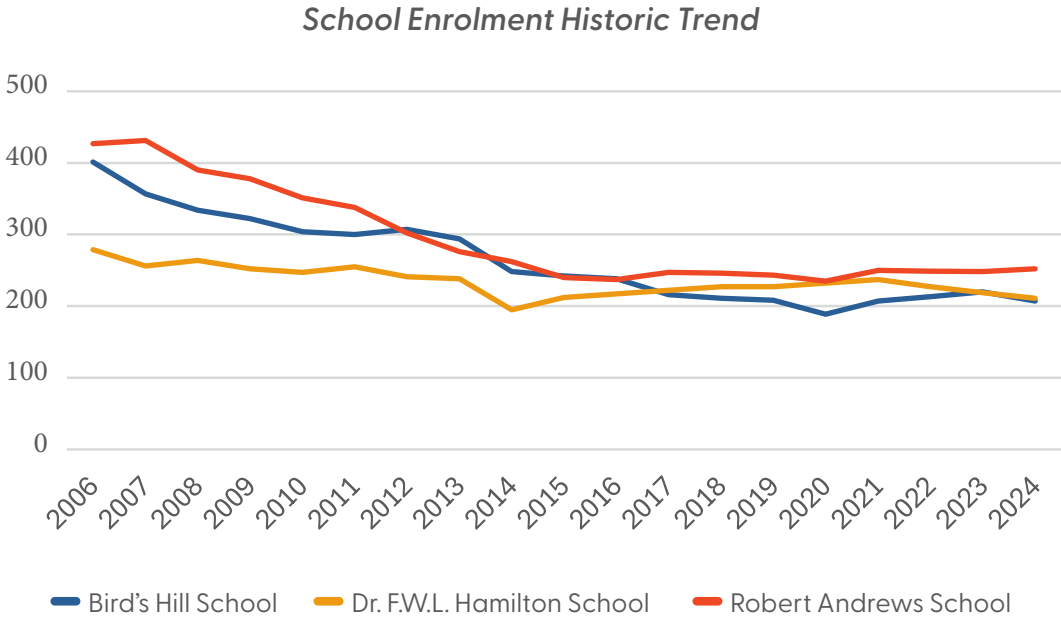
2. Historic Enrolment

Student enrolment for schools in East St. Paul is presented below and covers the period from 2006 to the most recent available year, 2024. The information is retrieved from the Province of Manitoba and has been prepared by RETSD.

Historic data demonstrates that the highest enrolment occurred in the mid-2000s at the beginning of the study period. Robert Andrews and Bird’s Hill School had the highest number of students at 431 and 401, followed by Dr. F.W.L. Hamilton School at 279.

Steady decline in enrolment occurred until the mid-2010s, reaching 262 students at Roberts Andrews, 248 students at Bird’s Hill, and 195 students at Dr. F.W.L. Hamilton School.

Following the period of decline, enrolment levels across the schools generally stabilized over the past decade. All schools have maintained roughly 200–250 students since 2020.



Please see Appendix A for the full enrolment tables for each school in East St. Paul.

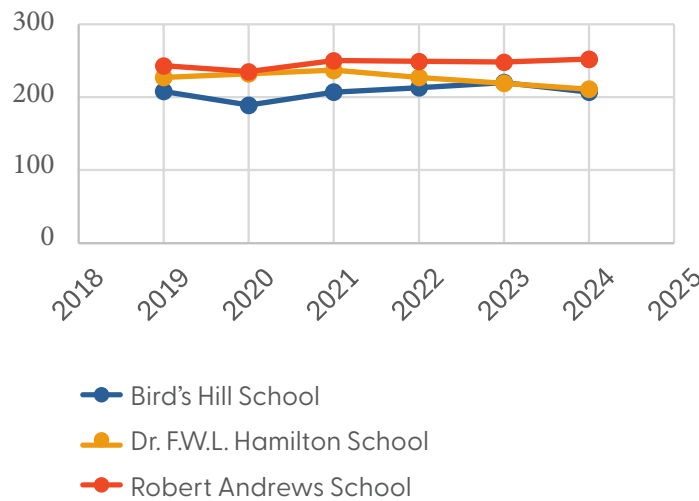
3. Recent Enrolment

Enrollment levels at all three schools have remained relatively stable between 2019-2024:

- Bird’s Hill School has recorded an average enrolment of 207 students, with a high of 220 students in 2023 and a low of 189 students in 2020.
- Dr. F.W.L. Hamilton School has recorded an average enrolment of 225 students, with a high of 237 students in 2021 and a low of 211 students in 2024.
- Robert Andrews Middle School has recorded an average enrolment of 246 students, with a high of 252 students in 2024 and a low of 235 students in 2020.

This stable trend over recent years provides a useful baseline for evaluating potential school capacity and the ability to accommodate additional students associated with population growth and new residential development within East St. Paul.

Recent Trends (2019 to 2024)



4. Estimated Capacity

The highest recorded enrolment for each school over the last twenty years is assumed to be approximate to the overall capacity of the school. As outlined in the table below, the estimated capacity for each school is measured by using the historical peak enrolment, subtracted by 2024 enrolment. These comparisons suggest that each school over recent years operates well below its historical peak and has available space to accommodate additional students.

School	Highest (peak) Enrolment	Average Enrolment (2006 to 2024)	Recent Trends (2019 to 2024)	2024 enrolment	Estimated Capacity (as of 2024)
Bird's Hill School	401	264.1	207.3	207	194
Dr. F.W.L. Hamilton School	279	234.6	225.5	211	68
Robert Andrews Middle School	431	294.8	246.1	252	179

5. Student Demographics

The population of elementary- and middle-years school-aged children in East St. Paul, defined as ages 5 to 14, was approximately 1,200 in 2021. This was slightly lower than the 2010 figure of 1,220, but higher than the 2016 figure of 1,120. Overall, this suggests that the school-aged population has remained relatively stable over the longer term, with some fluctuation between census periods.

In 2021, 694 children aged 5 to 14, or 57.83 percent of this age group, were enrolled in public schools located within East St. Paul. This was almost unchanged from 2016, when 692 children, or 61.79 percent, were enrolled in local public schools. In contrast, the proportion was much higher in 2010, when 902 children, or 73.93 percent, attended public schools within East St. Paul.

At the same time, the number and share of children not enrolled in East St. Paul public schools has increased. In 2010, this group accounted for 318 children, or 26.07 percent of the age 5-14 population. By 2016, this had risen to 428 children, or 38.21 percent. In 2021, the figure increased further to 506 children, or 42.17 percent.

These findings indicate that a growing share of school-aged children residing in East St. Paul are attending schools outside the municipality or receiving education through other arrangements. This may include attendance at private schools, enrolment in specialized or alternative programs in nearby jurisdictions, or home-based education.

	2021	2016	2010
Population age 5–14	1200	1120	1220
Enrolment in East St. Paul Schools	694 (57.83%)	692 (61.79%)	902 (73.93%)
Enrolment in schools outside of East St. Paul	506 (42.17%)	428 (38.21%)	318 (26.07%)

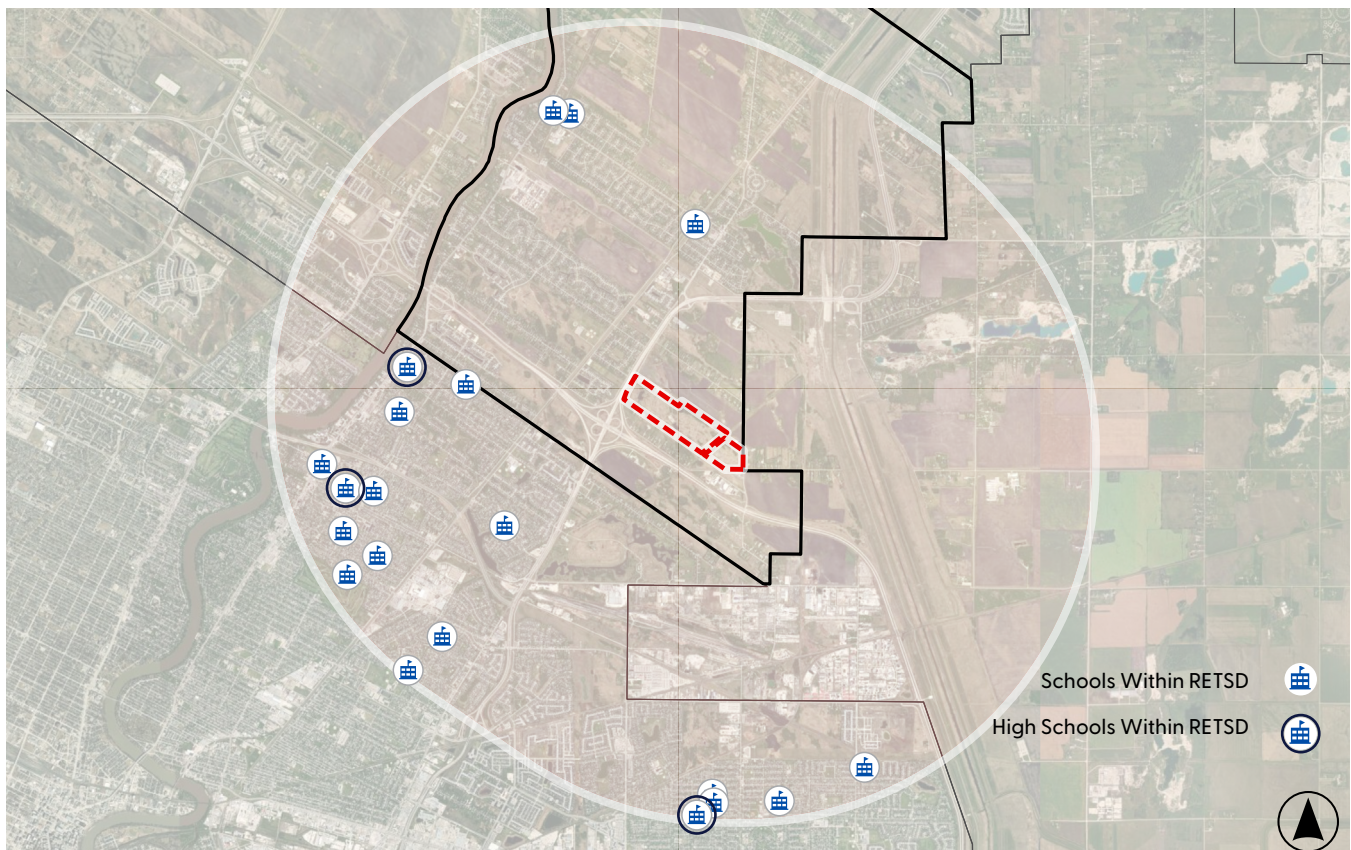
6. Nearby Schools within RETSD

A spatial review using a 5-kilometre buffer from the Meadows site identifies several additional schools within a reasonable driving distance of East St. Paul. These nearby schools are located in the City of Winnipeg and operate within the River East Transcona School Division. As part of the broader RETSD public school system, they contribute to the wider network of schools serving northeast Winnipeg and surrounding municipalities, including East St. Paul.

Within the 5-kilometre buffer, there are around 14 Kindergarten to Grade 8 schools and 3 senior high schools within RETSD. The presence of nearby Kindergarten to Grade 8 schools provides additional options for elementary- and

middle-years students. The presence of nearby senior high schools is also significant, as East St. Paul does not contain a senior high school of its own. These nearby senior high schools, therefore, provide educational options for high school-aged children residing in East St. Paul.

Schools within the City of Winnipeg likely serve many students from East St. Paul due to their proximity and their location within the same school division. The broad availability of schools within the River East Transcona School Division provides additional flexibility in accommodating students who may reside within East St. Paul but attend schools within City of Winnipeg catchment areas.



7. Planning Implications

Historic enrolment records show that the three schools within East St. Paul once accommodated significantly higher student populations during the mid-2000s. Enrolment declined through the late 2000s and early 2010s and has stabilized since approximately 2015. Current enrolment trends are generally consistent with recent operating averages but remain below historical peak levels, suggesting that some capacity may exist within the existing schools in East St. Paul.

Several schools located within the City of Winnipeg fall within a reasonable driving distance of East St. Paul and are assumed to serve around 40% of the student population in East St. Paul.

Taken together, the analysis indicates that the education system serving East St. Paul functions as part of a regional network of schools. Existing schools within the East St. Paul have capacity to accommodate additional population growth and associated residential development, at least for the foreseeable future.

The proposed Meadows Development is anticipated to build out at approximately 2,315 dwelling units. This level of residential growth has the potential to generate additional student enrolment over time. This growth will occur gradually, as development is expected to proceed on a phased basis rather than all at once. At full buildout, the Province will ultimately determine whether additional school facilities or capacity measures are required. As development proceeds, student enrolment trends will need to be monitored on an ongoing basis to assess how growth in each phase is affecting local schools and whether further planning responses are needed.

8. Appendix: School Enrolment Data

Bird's Hill School

Enrolment at Bird's Hill School shows a long-term decline followed by stabilization. 2006 enrolment reached 401 students. The school gradually declined through the late 2000s and early 2010s. By 2014 enrolment dropped to approximately 248 students.

After the structural change in grade organization, enrolment stabilized between approximately 200 and 220 students. The most recent figure in 2024 shows 207 students.

The earlier enrolment levels included Grade 6 students. After the grade reorganization the school now accommodates only Kindergarten through Grade 5. This explains part of the reduction.

Bird's Hill School

Kindergarten to Grade 5
3950 Raleigh Street
East St. Paul, Manitoba R2E 0G9
(204) 663-7669

Year	K	1	2	3	4	5	6	7	8	9	10	11	12	TOTAL
2006	50	44	45	55	77	52	78	–	–	–	–	–	–	401
2007	31	52	45	42	60	74	53	–	–	–	–	–	–	357
2008	40	32	47	42	44	61	68	–	–	–	–	–	–	334
2009	42	43	36	48	46	47	60	–	–	–	–	–	–	322
2010	34	46	43	37	50	47	47	–	–	–	–	–	–	304
2011	39	39	45	42	37	53	45	–	–	–	–	–	–	300
2012	46	40	39	45	44	40	53	–	–	–	–	–	–	307
2013	32	47	43	43	44	44	41	–	–	–	–	–	–	294
2014	36	36	48	45	38	45	–	–	–	–	–	–	–	248

Year	K	1	2	3	4	5	6	7	8	9	10	11	12	TOTAL
2015	33	38	37	45	51	38	–	–	–	–	–	–	–	242
2016	28	39	40	37	44	50	–	–	–	–	–	–	–	238
2017	29	32	34	39	38	44	–	–	–	–	–	–	–	216
2018	31	31	31	34	45	39	–	–	–	–	–	–	–	211
2019	35	33	31	35	35	39	–	–	–	–	–	–	–	208
2020	26	32	33	29	32	37	–	–	–	–	–	–	–	189
2021	31	30	41	40	30	35	–	–	–	–	–	–	–	207
2022	37	33	29	43	41	30	–	–	–	–	–	–	–	213
2023	29	38	35	33	41	44	–	–	–	–	–	–	–	220
2024	36	32	38	33	32	36	–	–	–	–	–	–	–	207

Dr. F.W.L. Hamilton School

Dr. F.W.L. Hamilton School displays a similar pattern. Enrolment was 279 students in 2006 and remained near that level until the late 2000s. Numbers declined gradually through the early 2010s.

Following the removal of Grade 6 from the school, enrolment stabilized between roughly 210 and 240 students. The 2024 enrolment is 211 students.

The school therefore appears to be operating at a consistent scale after the grade reorganization.

Dr. F.W.L. Hamilton School

Kindergarten to Grade 5

3225 Henderson Hwy

East St. Paul, Manitoba R2G 0J2

(204) 661-2500

Year	K	1	2	3	4	5	6	7	8	9	10	11	12	TOTAL
2006	21	33	34	39	56	45	51	–	–	–	–	–	–	279
2007	31	24	34	34	40	54	39	–	–	–	–	–	–	256
2008	32	37	26	38	36	40	55	–	–	–	–	–	–	264
2009	30	38	38	30	40	35	41	–	–	–	–	–	–	252
2010	32	31	39	39	32	40	34	–	–	–	–	–	–	247
2011	34	35	34	40	42	31	39	–	–	–	–	–	–	255
2012	33	32	32	33	39	44	28	–	–	–	–	–	–	241
2013	28	32	32	31	35	41	39	–	–	–	–	–	–	238
2014	30	29	30	41	31	34	–	–	–	–	–	–	–	195
2015	36	35	32	35	41	33	–	–	–	–	–	–	–	212
2016	34	37	33	32	36	45	–	–	–	–	–	–	–	217

Year	K	1	2	3	4	5	6	7	8	9	10	11	12	TOTAL
2017	39	40	37	35	35	36	–	–	–	–	–	–	–	222
2018	34	42	40	37	37	37	–	–	–	–	–	–	–	227
2019	35	37	41	41	37	36	–	–	–	–	–	–	–	227
2020	36	37	35	41	43	40	–	–	–	–	–	–	–	232
2021	31	42	42	37	42	43	–	–	–	–	–	–	–	237
2022	21	31	45	42	42	46	–	–	–	–	–	–	–	227
2023	37	22	33	42	43	42	–	–	–	–	–	–	–	219
2024	24	42	24	37	43	41	–	–	–	–	–	–	–	211

Robert Andrews Middle School

Robert Andrews Middle School serves Grades 6 through 8.

The school enrolled 427 students in 2006 and reached a peak of 431 students in 2007. Throughout the mid-2000s, enrolment remained above 400 students. Enrolment declined steadily through the early 2010s, reaching approximately 240 students by the mid-2010s.

After the grade reorganization the school stabilized around 240 to 250 students. The most recent enrolment in 2024 is 252 students.

The transfer of Grade 6 students from elementary schools likely contributed to stabilizing enrolment in the middle school during the later years.

Robert Andrews Middle School

Grade 6 to 8

3230 Manlius Street

East St. Paul, Manitoba R2E 0H7

(204) 661-5838

Year	K	1	2	3	4	5	6	7	8	9	10	11	12	TOTAL
2006	–	–	–	–	–	–	141	147	139	–	–	–	–	427
2007	–	–	–	–	–	–	142	145	144	–	–	–	–	431
2008	–	–	–	–	–	–	104	140	146	–	–	–	–	390
2009	–	–	–	–	–	–	134	103	141	–	–	–	–	378
2010	–	–	–	–	–	–	114	133	104	–	–	–	–	351
2011	–	–	–	–	–	–	95	115	128	–	–	–	–	338
2012	–	–	–	–	–	–	93	94	115	–	–	–	–	302
2013	–	–	–	–	–	–	95	92	89	–	–	–	–	276
2014	–	–	–	–	–	–	81	83	98	–	–	–	–	262
2015	–	–	–	–	–	–	78	79	83	–	–	–	–	240

Year	K	1	2	3	4	5	6	7	8	9	10	11	12	TOTAL
2016	–	–	–	–	–	–	74	79	84	–	–	–	–	237
2017	–	–	–	–	–	–	91	75	81	–	–	–	–	247
2018	–	–	–	–	–	–	83	84	79	–	–	–	–	246
2019	–	–	–	–	–	–	77	84	82	–	–	–	–	243
2020	–	–	–	–	–	–	76	77	82	–	–	–	–	235
2021	–	–	–	–	–	–	95	75	80	–	–	–	–	250
2022	–	–	–	–	–	–	84	89	76	–	–	–	–	249
2023	–	–	–	–	–	–	79	81	88	–	–	–	–	248
2024	–	–	–	–	–	–	95	81	76	–	–	–	–	252



236 Osborne St. Unit A
Winnipeg, MB R3L 2W2
E: info@mrichard.ca | T: 204-202-7672
mraplanning.ca